



PVC CASEMENT AND AWNING

Our **SolarStar** series introduced in 2011 is the latest evolution of the casement and awning window system for which Solaris has become renown. A unique Solaris design, these windows are available in a 4 5/8", 5 5/8" or a 6 5/8" frame with the advantage of a recessed sash located within the insulated part of the wall. This unique feature, combined with a multiple air chamber design, considerably reduces heat loss and condensation.

The frame and sash have fusion-welded corner joints to prevent air and/or water infiltration, as well as a combination of three easy-to-replace weather-strips on the sash. Retention moldings for the sealed glazed units are situated on the inside of the pane for added security. These can be easily removed to replace a glazed unit.

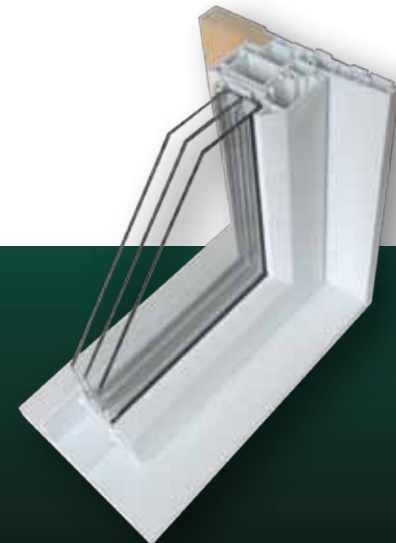
The frame and sash on the **SolarStar** series are constructed of high impact resistant PVC that complies with all North American standards. See pages 18 and 19.



They will surprise you!

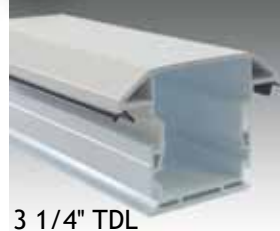
FEATURES:

- 4 5/8" frame
- 5 5/8" and 6 5/8" frame profiles are available, they position the sash in the inner part of the wall to reduce the risk of condensation and improve energy efficiency
- 0.078" (2 mm) thick exterior walls
- Contemporary sash design
- Fusion-welded corners for extra strength
- Multiple air chambers for warmth and comfort
- Integrated frame cavity for drywall or wood jamb extensions
- Fiberglass screen mounted on an aluminum frame
- No caulked joints
- 7/8" double-glazed units or 1 3/8" triple-glazed units
- 6 degree sill slope for better water drainage
- Easily replaceable triple weather-stripping on sashes
- Invisible water drainage system
- Frame structure ensures maximum window area
- Retractable "Encore" handle made by Truth
- Polyurethane foam in mullions of bay and bow windows (4 5/8" frame only)
- Contemporary-style retention molding installed inside for maximum security
- Multi-point locking mechanism lets you open and close with a single movement



OPTIONS :

- Non-standard dimensions available with a wide range of transoms
- Acrylic-urethane enamel finish on all interior and exterior surfaces available in a wide variety of colors.
- (11/16" and 1 1/4") brick moulds, nailing and J nailing fin (see page 17)
- Integrated georgian, flat or pencil aluminum grills (see page 16)
- (Low-E) glazed units insulated with argon gas
- Many interior jamb extensions available (see page 16)
- 1 1/4", 2" and 3 1/4" true divided lite window also available in combinations



3 1/4" TDL